



Linear Actuators

MOVETEC



True Innovative Moving Technology



MOVE
TA1-Series
Power Rating
Duty Cycle
Max Load
Max Current
IP68
DC24V
107x44x78mm
Push 3500N
Max. 8.8Amp
CE
MADE IN CHINA
Part No. TA1-2-108-544
Spec Code TA1-20-30045-2011-108-544
Serial No. 201412222546





Movetecs tailor-made linear actuators are made specially for your applications. Our aluminium columns are produced in our own factory in Middelfart, Denmark. Movetecs warehouse for linear actuators, lifting columns, control boxes, control panels/handsets, is located at same address.



TA1**TA2****TA2P****TA3**

TA1

LINEAR ACTUATOR

A flagship model suited for industrial and ergonomic applications, healthcare and furniture.

Specifications:

- Voltage 12V, 24V or 36V DC
- Max. load: 10,000N in push
- Max. load: 4,000N in pull
- Max. speed, no load: 38.0mm/s
- Max. speed, full load: 23.2mm/s
- Min. install. dim.: stroke+163mm
- Color: black or grey

Options:

- Tailor-made stroke lengths shortening possible
- Protect. class: IP54/IP66/IP66W
- Manual release, freewheeling push only, safety nut, quick release.
- Hall/Reed sensor(s)

TA2

LINEAR ACTUATOR

Compact, robust, fully sealed. Perfect for use in small spaces where force/capability cannot be sacrificed.

Specifications:

- Voltage 12V, 24V, 36V or 48V DC
- Max. load: 1,000N in pull/push
- Max. speed, no load: 64.0mm/s
- Max. speed, full load: 47.0mm/s
- Min. install. dim.: stroke+105mm (without output signals)
- Min. install. dim.: stroke+135mm (with output signals)
- Color: silver

Options:

- POT, Optical, Hall/Reed sensor(s)
- Compact size for limited space
- Feedback sensors, signal sending limit switches, 90° clevis mounting.

TA2P

LINEAR ACTUATOR

High powered version of TA2, makes TA2P capable of handling load ratings up to 2000N (450 pounds), while retaining its compact size.

Specifications:

- Voltage 12V, 24V, 36V or 48V DC
- Max. load: 2,000N in pull/push
- Max. speed, no load: 55.0mm/s
- Max. speed, full load: 46.0mm/s
- Min. install. dim.: stroke+108mm (With Hall sensor(s) or without output signals)
- Min. install. dim.: stroke+138mm (With POT, Optical, or Reed signals)
- Color: silver

Options:

- POT, Optical, Hall/Reed sensor(s)
- Optional IP rating 54 or 66

TA3

HEAVY-DUTY ACTUATOR

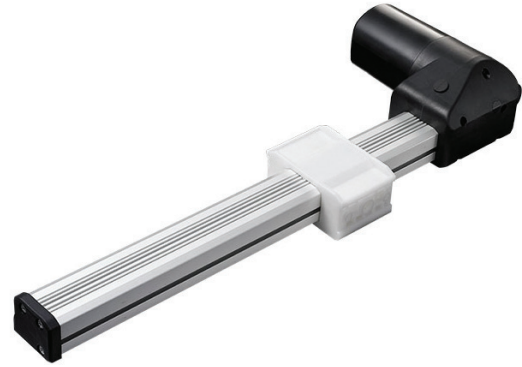
The proven choice for applications requiring a durable, long life solution, designed for harsh working environments, heavy-duty machinery/industry.

Specifications:

- Spindle: ACME or Ball screw
- 12/24/36V DC or 110/230V AC
- Max. load: 4,500N in pull/push
- Max. speed, no load: 58.5mm/s
- Max. speed, full load: 48.0mm/s
- Min. install. dim.: stroke+160mm (without POT). Min. install. dim.: stroke+196mm (with POT or Hall)
- Protection class: IP66D, dyn.comp.
- Color: black

Options: Overload clutch, Hall sensor, POT, man. crank function - mech. or electromagn. + more, see data sheet



TA4**TA5****TA6****TA7**

TA4

LINER ACTUATOR

Compact, quiet and powerful. It is designed to fit in an area specifically requiring a right angle motor. Can be equipped with Hall sensor for feedback.

Specifications:

- Voltage 12V or 24V DC
- Max. load: 3,500N in push
- Max. load: 2,000N in pull
- Max. speed, no load: 40.0mm/s
- Max. speed, full load: 17.0mm/s
- Min. install. dim.: stroke+140mm
- Color: silver

Options:

- Tailor-made stroke lengths shortening possible
- Low noise
- Hall sensor(s)
- Optional IP54 or 66 rating

TA5

SLIDE ACTUATOR

TA5 offers an alternative to tube-style actuators by utilizing a linear slide to move the load, instead of a standard extension tube. This allows a significantly shorter retracted length.

Specifications:

- Voltage 12V, 24V or 36V DC
- Max. load: 6,000N in push
- Max. load: 3,000N in pull
- Max. speed, no load: 58.0mm/s
- Max. speed, full load: 30.0mm/s
- Min. install. dim.: stroke+140mm
- Color: black

Options:

- Tailor-made stroke lengths shortening possible. Hall sensor(s).
- L-shaped mounting bracket. Outer tube assembled by 3 alum. pieces

TA6

LINER ACTUATOR

For lift applications like recliners, lifting chairs and more. Right angle design reduces noise, allows for fitment into most applications. Used where freewheeling push only functionality is desired.

Specifications:

- Voltage 12V, 24V or 36V DC
- Max. load: 6,000N in push
- Max. load: 4,000N in pull
- Max. speed, no load: 38.2mm/s
- Max. speed, full load: 23.2mm/s
- Min. install. dim.: stroke+163mm
- Color: black

Options:

- Tailor-made stroke lengths shortening possible.
- Freewheeling push only. Safety nut.
- Hall sensor(s) for position feedback

TA7

MEDICAL ACTUATOR

Economical choice for applications requiring a compact, long life linear actuator. Design is compliant with key standards such as CB (3rd medical electrical equipment).

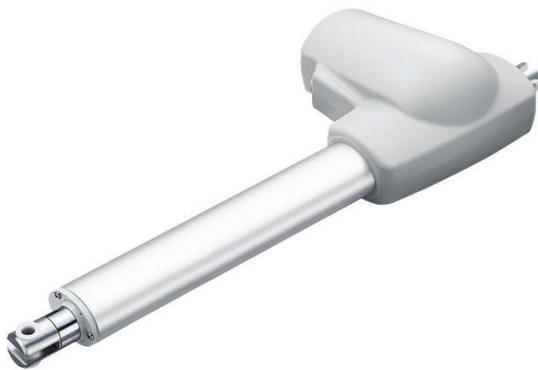
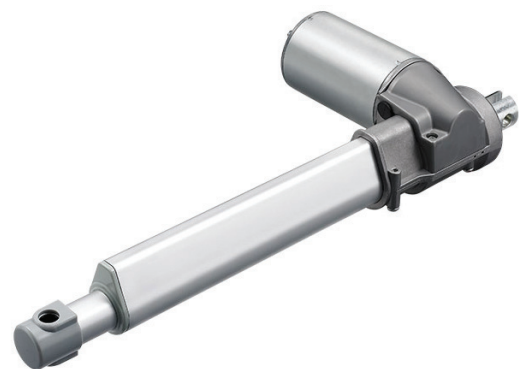
Specifications:

- Voltage 12V, 24V or 36V DC
- Max. load: 10,000N in push
- Max. load: 4,000N in pull
- Max. speed, no load: 38.0mm/s
- Max. speed, full load: 23.2mm/s
- Min. install. dim.: stroke+171mm
- Color: black or grey

Options:

- Tailor-made stroke lengths shortening possible. Hall/Reed sensor(s).
- Optional IP54 or IP66 rating
- Freewheeling push only. Safety nut.



TA9**TA10****TA12****TA13**

TA9

LINEAR ACTUATOR

Economical and compact solution. Designed with a custom gear box, molded with a specially formulated plastic material which allows the TA9 to support load ratings up to 2500N.

Specifications:

- Voltage 12V or 24V DC
- Max. load: 2,500N in push
- Max. load: 1,000N in pull
- Max. speed, no load: 58.0mm/s
- Max. speed, full load: 24.0mm/s
- Min. install. dim.: stroke+140mm
- Color: black or grey
- Protection class: IP54 or IP66

Options:

- Tailor-made stroke lengths shortening possible
- Hall sensor(s)

TA10

MEDICAL ACTUATOR

Primarily used in the medical industry. Handles high loads. Designed with a manual crank attachment, medical staff will be able to operate the manual crank to adjust the patient bed.

Specifications:

- Voltage 12V, 24V or 36V DC
- Max. load: 6,000N in push
- Max. load: 4,000N in pull
- Max. speed, no load: 14.3mm/s
- Max. speed, full load: 7.6mm/s
- Min. install. dim.: stroke+188mm
- Color: black or grey
- Protection class: up to IP66

Options:

- Tailor-made stroke lengths shortening possible. Hall sensor(s).
- Manual crank function

TA12

HIGH-LOAD ACTUATOR

For high-load patient lifts and bariatric beds. These applications require focus on safety, reliability and effortless operation. Manual release function allows for lowering of the patient in the event of emergency or electrical power outage.

Specifications:

- Voltage 12V, 24V or 36V DC
- Max. load: 12,000N in push
- Max. load: 6,000N in pull
- Max. speed, no load: 57.0mm/s
- Max. speed, full load: 32.0mm/s
- Min. install. dim.: stroke+210mm
- Color: black or grey

Options:

- Hall/Reed/POT sensor(s). Safety nut.
- Optional IP54 or IP66 rating
- Manual release

TA13

HIGH-PUSH ACTUATOR

For dental chairs requiring high-push load solutions, and for industrial use to a wide range of applications. Positional feedback + manual operation in event of a power loss are optional features.

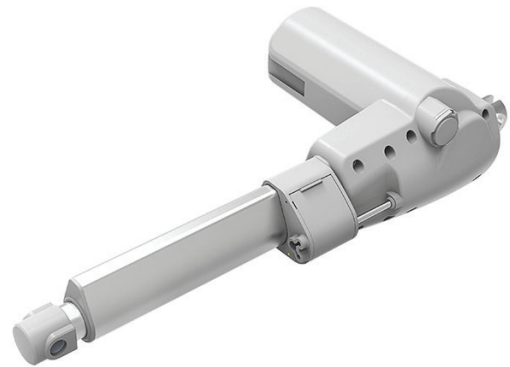
Specifications:

- Voltage 24V or 36V DC
- Max. load: 8,000N in push
- Max. load: 4,000N in pull
- Max. speed, no load: 10.7mm/s
- Max. speed, full load: 6.0mm/s
- Min. install. dim.: stroke+185mm
- Color: black or grey

Options:

- Manual release
- Hall sensor(s)
- Push only (limited for push application). Suitable for dentist appl.



TA14**TA15****TA16****TA17**

TA14

LINEAR ACTUATOR

For lift applications like recliners, lifting chairs and movie theater seating. Designed to function as a direct cut system, eliminating the need for a control box. Simple and economical alternative.

Specifications:

- Voltage 12V, 24V or 36V DC
- Max. load: 6,000N in push
- Max. load: 4,000N in pull
- Max. speed, no load: 38.2mm/s
- Max. speed, full load: 23.2mm/s
- Min. install. dim.: stroke+163mm
- Color: black or dark grey
- Direct-cut: function without control box

Options:

- Tailor-made stroke lengths shortening possible. Safety nut.
- multiple mounting styles for the front

TA15

LINEAR ACTUATOR

For bariatric bed applications which require a robust, long life solution that incorporates safety, reliability and effortless operation. The manual release function allows for lowering of the patient in event of an emergency or electrical power outage.

Specifications:

- Voltage 24V or 36V DC
- Max. load: 8,000N in push
- Max. load: 4,000N in pull
- Max. speed, no load: 8.4mm/s
- Max. speed, full load: 4.4mm/s
- Min. install. dim.: stroke+210mm
- Color: black or grey

Options:

- Tailor-made stroke lengths shortening possible.

TA16

LOW-NOISE ACTUATOR

Similar to TA2, but is specifically designed for low-noise medical applications where a compact actuator is needed.

Specifications:

- Voltage 12V or 24V DC
- Max. load: 2,500N in push/pull
- Max. speed, no load: 16.6-18.8mm/s
- Max. speed, full load: 9.4-11.2mm/s
- Min. install. dim.: stroke+112mm (without output signals)
- Color: silver
- With very low noise
- Small size for easy installation

Options:

- Tailor-made stroke lengths shortening possible.
- Hall sensor(s)
- Protection class: up to IP66

TA17

INLINE ACTUATOR

For low load medical-, industry- and furniture applications. It is best suited for applications where compact installation dimensions are required.

Specifications:

- Voltage 12V or 24V DC
- Max. load: 2,000N in push/pull
- Max. speed, no load: 25.0mm/s
- Max. speed, full load: 15.5mm/s
- Min. install. dim.: stroke+217mm (without output signals)
- Color: black or grey
- In-line actuator specially designed with a small dimension

Options:

- Tailor-made stroke lengths shortening possible.
- Protection class: up to IP66



TA18**TA19****TA23****TT1**

TA18

IN-LINE ACTUATOR

In-line actuator is most similar to TA17, designed for medical and furniture applications that require higher load and speed, suitable for nursing carts/desks.

Specifications:

- Voltage 12V or 24V DC
- Max. load: 4,500N in push
- Max. load: 3,000N in pull
- Max. speed, no load: 38.3mm/s
- Max. speed, full load: 24.0mm/s
- Min. install. dim.: stroke+289mm
- Color: black
- An in-line actuator design with a compact installation dimension

Options:

- Tailor-made stroke lengths shortening possible
- Optional IP rating up to 66

TA19

LINEAR ACTUATOR

A quiet, telescopic style linear actuator suited for height-adjustable work tables. Telescopic tube design allows a longer stroke with a shorter retracted length and reduced installation dimensions.

Specifications:

- Voltage 12V or 24V DC
- Max. load: 1,000N in push
- Max. speed, no load: 64.0mm/s
- Max. speed, full load: 30.0mm/s
- Min. install. dim.: stroke/2+165mm
- Color: silver
- Reduced installation dimensions

Options:

- Tailor-made stroke lengths shortening possible
- Hall sensors for position feedback

TA23

LINEAR ACTUATOR

A compact actuator primarily used for medical applications that require high force and high speed. Economical solution, compact installation dimension.

Specifications:

- Voltage 12V, 24V or 36V DC
- Max. load: 8,000N in push
- Max. load: 4,000N in pull
- Max. speed, no load: 38.0mm/s
- Max. speed, full load: 23.2mm/s
- Min. install. dim.: stroke+171mm
- Color: silver

Options:

- Tailor-made stroke lengths shortening possible
- Optional IP 54 or IP 66 rating
- Hall or Reed sensors for position feedback.

TT1

TWIN BED ACTUATOR

A twin spindle actuator, specifically designed for home care and patient care facility beds. TT1 electrical controls come standard with a range of voltages. Equipped with a SMPS transformer. Less than 0.1W of standby power consumption. Sophisticated housing design, reliable mechanical stability, provides an alternative motor solution for various medical beds.

Specifications:

- Main voltage: (Input) 100-230V AC
- SMPS 29V DC, 2.5A (output)
- Max. load: 6,000N in push only
- Dimension between shaft: 581mm
- Max. speed, no load: 6.8mm/s
- Max. speed, full load: 4.6mm/s
- Stroke 87mm (backrest)
- Stroke 69mm (footrest)



Control Boxes and Handsets with Standard or Tailor-made Programming: Stroke Length, Speed, Load



Movetec Aluminium Lifting Columns - A Family of only Tailor-made High Quality Lifting Columns





MOVE

TA1-Series	IP66
Power Rating	: DC24V
Duty cycle	: 10%, Max 2Min ON/12Min OFF
Max.Load	: Push 3500N
Max.Current	: Max.6.0Amp

MADE IN CHINA

Part No. TA1-2108-044

Spec code TA1-2Q-300445-2A1130-01246-M

Serial No. 201412223546



About MOVETEC

MOVETEC have a wide range of products within linear actuator technology and linear aluminium columns. Our vision is to be able to offer the right actuator solution for all customers from the industry. The main focus is flexibility and you should all feel that we do our utmost to adapt our products to fit precisely your application. Also our service level is an important part of our concept as everyone should receive great service both before ordering and after receiving our products. Our customers should feel that we have done our best every time.

MOVETEC is a professional organisation consisting of a team of engineers, technicians, customerservice employees as well as sales people. This competent team has several years of experience within linear actuator technology. The main task for MOVETEC is to advise the customer about the most profitable solution.

MOVETEC - True Innovative Moving Technology. MOVETEC offers actuator solutions for all industries. We will continuously present new products and if you wish to be updated immediately, please sign up for our newsletters.

MOVETEC offers tailor-made solutions where our standard products do not meet the requirements - in fact all our standard products is custom- or tailor-made products within some minimum and maximum stroke lengths, push forces, speed etc. Contact us for a solution to your installation - we will be happy to visit you and your company to explore and illuminate the possibilities for your project in depth.

MOVETEC

Tel. +45 64 89 28 05 · www.movetec.dk



True Innovative Moving Technology